



The STX Big Island Adventure Camp @ AZ Academy 2018

June 2018

camp@azvi.org

Volume 13

Issue 1

3036 Estate Orange Grove Christiansted, VI 00820 Phone (340) 718-7909 Cell (340) 244-7035

On Campus Activities

- Swimming
- Life Skills
- Gym
- Team Building
- Art
- Music & Movement
- FunADEMICS
- Special Guest
- Talent Show
- Soul Kallaloo

Adventurous Field Trips

- Some 1/2 Days
- Some Full Days
- Some Extended Days
- Some-Overnight
- Nominal fee charged for some, many included in camp fee
- **ALL are FUN!**

Theme: R.I.S.E.

Our overall mission is to LOVE each other unconditionally while stretching our comfort zones by engaging in various hands on adventurous activities. This summer our camp theme is "R.I.S.E." which means **Resilient, Inspiring, Soaring, and Envision!** We are challenging and encouraging our campers to SUPPORT one another by channeling those 4 qualities. We will still also encourage all to be courageous, bold, generous, a go - giver and most importantly BE YOUR AUTHENTIC SELF! Our campers will start each day off with Declarations of "I RISE" and move from activity to activity celebrating being and embracing each others uniqueness throughout the day. We will be out and about every Friday exposing people to our Soul Kallaloo! We will spread joy through hands-on activities designed to randomly stop people in their everyday grind and remind them of what is really important in life. We are excited and looking forward to an amazing summer! Please spread the word about **Our World Famous STX Big Island Adventure Camp & Country Club HEY!** @ AZ Academy! Please view our Facebook page - Big Island Adventure Camp @ AZ.

Camp Philosophy

We are committed to offering each camper a safe and nurturing environment where he/she will experience unconditional love, acceptance and tolerance. We have every intention to offer each camper an opportunity to learn and grow individually through experiential activities set in a fun, relaxed, and non-competitive environment.

Expectation of Campers:

- #1 Come to camp everyday with a **Positive Attitude**, ready to have a **BLAST!**
- #2 Be open and willing to try every activity that is offered!
- #3 Mark all belongings with a permanent marker!
- #4 Bring a towel for swimming and a water bottle for drinking! (cups will NOT be given out)
- #5 Misconduct will be referred to the camp director and handled accordingly!

Camper of the Week: If your camper shows up at the end of the week with a special t-shirt and heart-shaped sunglasses, then she/he has been chosen as camper of the week for his/her group! Camper of the week is determined by the number of beads a camper earns for doing extra special things during the week. Our staff will be focused on **catching campers** doing the right thing and awarding them with beads. Beads will be placed on a silver chain. We crown the camper of the week each Friday morning. So be on the look out for BEADS and **that coveted Camper of the Week t-shirt!**

THANK YOU Thank you for choosing to attend the STX BIAC @ AZ Academy. We are truly honored that you have chosen to spend part of your summer with us. We look forward to a summer filled with fun, sun, excitement and adventure! We are here to serve our campers and their parents. Please feel free to call us should you have any questions, comments or requests. **Always, Living, Loving, Laughing, Learning and Playing**



So It's Your Child's First Day at Camp



What to Expect on the First Day: CELEBRATING 12 Years of Adventure!!

Opening/Closing: Daily ceremonies will be held in the famous Cruzana Manor Ruins. Once in the ruins, each camper will be assigned to his/her group. Grouping will be according to grade and age. Each group will have an assigned instructor, a group leader and CITs/volunteers. All are expected to serve the campers of that particular group throughout the day in the areas of attendance, keeping track of belongings, preparing for a field trip and any other special needs or incidents.

Before Camp Care Drop Off: Before care will be held on the upper AZ campus just like last summer. Campers arriving between 7:00 am - 8:15 am are to be dropped off near the single set of steps. They will then be escorted up the steps to the outside pavilion and eventually escorted to the ruins.

Regular Camp Hours Drop Off: Regular campers should arrive at 8:20 am. **No earlier!** If a regular camper habitually arrives before 8:20 am, a drop in fee will be charged. Opening Ceremonies begins daily at 8:30 am, SHARP! Campers arriving at 8:20 am are asked to be dropped off near the 1st single stair well as you enter the upper AZ campus. Campers arriving at this time will be escorted to the ruins by staff and CIT's.

For new campers who have not yet registered, parents MUST park towards the upper campus of AZ and go into our camp office directly behind the flag pole. We will get you registered and walk your camper down to the ruins.

Pick up may be a challenge if you don't read this: 3/4 yr olds & 5 yr olds will be seated on the Y steps or the first stair well as you drive up to AZ. All other age groups will be lined up at various spots along the tree line of the drive way. Older campers with younger siblings are asked to go to youngest siblings assigned area. 6 yr olds will be stationed up near the double stairway then 7/8 yr olds down between the next set of trees, then 9/10 yr olds and then 11/12/13 yr olds will further down to last trees.

PLEASE STAY IN YOUR CAR! Staff members will be outside directing traffic and pulling cars up to a certain spot. We pull up many cars, stop all cars and load campers, then we release the loaded cars and pull up the cars that need to be loaded and stop them at a point then load them with campers. **"When cars are moving campers are STOPPED & when campers are being loaded / moving ALL CARS are STOPPED!"** Campers will be loaded into their vehicles by staff members.

Running Late: If your camper is not picked up by 3:15 pm, he/she will be sent to aftercare and a drop in fee will be charged.

Late Arrivals or Early Departures: Parents must check their camper in or out in the camp office! The official camp office will be up the hill on the AZ property behind the flag pole. *This procedure is **CRITICAL** for the safety of our campers! Please honor this request and don't just drop off or pick up your camper.*

Special Needs Pick-Up: If there are any personal problems concerning who can or cannot pick up your camper or any unusual situation, please inform the camp director in writing.

After Care Campers: After care closes at 5:30 pm sharp! Please be on time! A \$20.00 late fee will be charged per camper each time a camper is picked up late. Please call, if you are running late **(340-244-7035)**.

After Care Pick Up: Please pick up your camper at the first set of steps as you approach the upper AZ campus.

Concession Deposits: Mandatory for all 3 yr olds - 10 yr olds and Open to All Campers and CITs

Each camper has access to an account in the concession stand. The amount will be deposited into his/her account. Therefore your camper does not have to carry around money! Each time a purchase is made, that camper's account will be deducted! **Suggested:** Weekly Budget - \$5.00/week

\$10.00 Breakfast sold during before care (7:00-8:15 am). (See fee schedule for lunches on Field trip form)

Camp T-Shirts: For safety reasons and easy identification, campers are expected to wear his/her camp t-shirt everyday. Please pick them up between the hours of 9:00 am - 4:00 pm in the camp office. Extra t0-shirts can be ordered by going online to place your order or calling Ms. Angie @ 340-718-7909 or 340-244-7035 or e-mailing us at camp@azvi.org. (\$12.00 per shirt)

Name Tags: We feel it is important to be able to address all of our campers by their first names. This year we will be using iron on name tags. Name tags and instructions will be in your t-shirt bag upon pick up.

Shoes: Campers are asked to wear sneakers, **not sandals** due to outdoor games and activities. Please remember this is camp. Please do not dress your camper in his/her best sneakers or shorts. They may get lost, torn or stained.

Water Bottles: In honor of our environment, we are requesting **that all campers bring a water bottle** in order to cut down on our use of paper products. He/She will need this bottle on campus and on all trips.

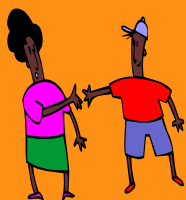
Sleeping Mats: 3/4 yr olds - this is the only group that will have an official nap time, so please bring a sleeping mat for your camper.

Camper's
Corner



PLEASE NO
electronic devices, iPods, cell
phones, toys, jewelry, etc.!

Who Are We?



CAMP
TEAM 2018

To Serve You
Better!

Camp
Office Will Be
Open:

Sat

June 18th
2:00-4:30pm

Please stop in ask
questions, deposit
concession mon-
ey, etc.

Office Hours:

M-F

7:30 am—
4:30 pm

MEET OUR GROUP LEADERS

Kool Kids Camp TEAM—3-5 yr olds:

Melissa Clarke: Teacher at AZ, experienced educator, loves kids, Camp Experience: 1st year on staff

Nicole Grey: Graduate of Free Will Baptist, elite soccer player for USVI, dynamic leader, full of amazing energy, super committed to serving and having a blast doing so, Camp Experience- Camper, CIT, 2nd year on Staff

Before & After Care - Dana Felix: Kindergarten staff at AZ, before and after care staff, creative, patient, committed to children, 7th year on staff

Group Leaders:

6/7 yr olds - Alyssa McGregor: Rising sophomore at Georgia State University, working on a degree in elementary education; has been a camper, and now 1st year on staff

8/9/10 yr olds - Jenice Smalls: Long time camper, CIT, and now staffer, Janice just graduated from high school and it happy to be joining us again this summer.

11/12/13 yr olds—Kydjana Lewis AKA KJ: Formerly a student at GHCDs, he is now entering his senior year at Monteverde Academy; has been a camper, a CIT, and now is on his 3rd year as staff

MEET OUR INSTRUCTORS

Music & Movement /Games & Team Leader

– Roxane Grey: Recent master's graduate of the College of William and Mary in Elementary Education, dynamic team player, Camp experience - CIT, Group Leader, Instructor, Emcee, 9th year on staff

Lifeguard - Nathaniel Camacho: GHCDs student, 2nd year on staff

Swimming - Mayah Russel

: Entering 2nd year at UVI in St. Thomas for degree in criminal justice; loves kayaking and promoting swimming safety; 3rd year on staff

Art - Patricia Bradshaw: A creative person who loves taking things and turning them into works of art; 2 years at AZ Academy, 3rd year on staff

Lunch/Concession - Jenee Santos: St Joseph graduate, currently a junior in college, leads by example, low key, cool, fun, Camp Experience— Camper, CIT and Group Leader, 6th year on staff

Bus Driver/Gym/Life Skills—Delriese Hamilton: St. Mary's Guest Teacher, and all around

life skills, this is her 1st year on staff

Housekeeping

Wanda Adames: An amazing hard working woman who is committed to keeping our classrooms and bathrooms clean. Has been on the AZ staff for 3 years , 5th year camp staff

Office Staff

Office Staff - Kia McNamara-Michael: Working on her Bachelor's degree in elementary education; teaches at St. Mary's School; parent of a camper and now 2nd year on staff

Program Specialist - Paula Heller: Executive Director of AZ Academy and co-founder of AZ Academy, 8th year on staff

Acct. Manager - Sarah Maynard: Business Manager at AZ Academy, background in banking, mother of 2, 10th year on staff

Director - Julie Landreneau: Trainer/presenter, summer camp director for the past 19 years;12th year on staff

Special Requests

- Please call if your camper is not attending camp for that day.
- You will be charged for all weeks you have registered for, whether your camper attends or not.
- NO electronic equipment, cell phones, valuable jewelry, personal toys. Not responsible if lost/stolen!
- **Please MARK** all of your camper's belongings. We can't return them if they are not marked!
- Each camper should have a tote bag for swimming, towel, water bottle and SUNSCREEN!
- Only Before Care campers are allowed to arrive before 8:20 am, except for field trips that are departing early!
- Please make us aware of any changes in your phone numbers, addresses and e-mail addresses!
- All camp correspondences will be via e-mails. Weekly newsletters, important notices, changes in schedules. Please let us know if you are not receiving camp e-mails or if you would prefer a hard copy!
- **Before/After Care Payments:** Due on the first Monday prior to the week you need this service.

June 18th- Aug 10th, 2018
8:30 am - 3:00 pm
\$100.00 Per Week

Multi-week Discounts Available!
Family Discounts Available!
Please Spread the Word!

To Serve YOU!

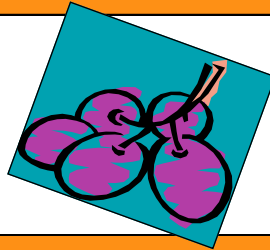
Camp Office will be Open

Saturday, June 16th - 2:00 - 4:30pm

Please stop by to pick up t-shirts, drop off field trip permission slips/
payment make payments and get your questions answered. Better to
do this early instead of Monday, June 18th.

That will be a **VERY** busy day!

Chow Time:



Reminders

Breakfast: A small selection of breakfast items will be sold in the mornings from 7:00 - 8:15 am or until sold out.
(*Sausage biscuits * Plain biscuits * Juices)

Please let us know if you would like your camper to have breakfast every morning; otherwise, **breakfast is served on a First Come, First Served Basis.**

Concession: The concession stand is open from 10:00 am to 2:45 pm everyday. Items vary in cost from \$0.25 to \$4.00

Please Note - Concession Bank Account: Deposit money weekly or for the entire summer and we will keep a running account of your campers' purchases and balance.

Pre-ordered Lunch: Weekly rate or bring a bag lunch

Free Lunch Program: Begins July 5th (3rd week of camp)

The First 2.5 Weeks of camp you **MUST** bring a bag lunch or order lunch with us!

For \$25 per week or \$8 daily

There is NO Free Lunch Served until The 3rd week of camp, Thurs July 5th

The Federal Lunch Program is not available until then!

Field Trip Payment Options: Pay for all field trips in advance by going online or use the magic envelope.

CLOSED Tuesday JULY 4th

Please MARK all of your camper's belongings. We can't return them if they are not marked!

Camper Supplies: Tote bag for swim suit, towel, water bottle, hat, and sun screen.

Before Camp Care: 7:00-8:15 am

Camp Hours: 8:20 am arrival time for regular campers until 3:00 pm

Info Changes: Please make us aware of any changes in your phone numbers, mailing or e-mail addresses

Before/After Care Payments: Due on the first Monday prior to the week that you need this service.